

EXTREME ACCURACY IS A THING OF BEAUTY.

TRU BLUE™

575 BARO



575 BARO features:

- Barometric pressure Accuracy of $\pm 0.1\%$ FS TEB
- Calibration report included with each instrument
- Five year permanent battery
- New fully sealed design
- 8 MB internal memory
- Two year warranty
- New user-friendly TruWare software for PC or Mobile
- Easier set-up and data retrieval
- Displays real-time instrument status and datagraphs

575 BARO applications:

barometric pressure accurate
measure SURFACEWATER data logger
atmospheric pressure water level
GROUND WATER absolute



FieldTech Solutions

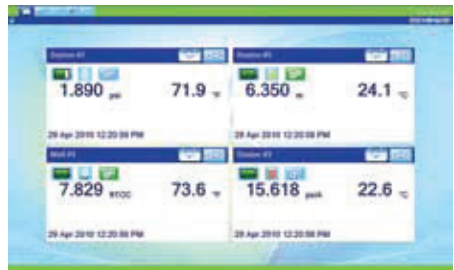
Tel - +61 3 9676 9664

37 Wirraway Drive, Port Melbourne, VIC.3207

Email - sales@fieldtechsoln.com

TRUBLUE 575 BARO

The 575 Baro is an absolute non-submersible pressure transducer. This unit provides local atmospheric pressure data that can be used to compensate one or more submerged, non-vented water level transducers. An absolute format measures all pressure applied to it including atmospheric. If submerged, it measures the atmospheric pressure plus pressure exerted by the column of water above the sensor. A level value can be arrived at using two absolute transducers—one submerged and one at ground level—subtracting atmospheric pressure from the submerged transducer measuring water pressure. A vented transducer provides a highly accurate water level reading with no further compensation required. This is accomplished via a vent tube that's internal to the cable connected to the transducer. The vent tube exposes the sensor to the pressure of open atmosphere.

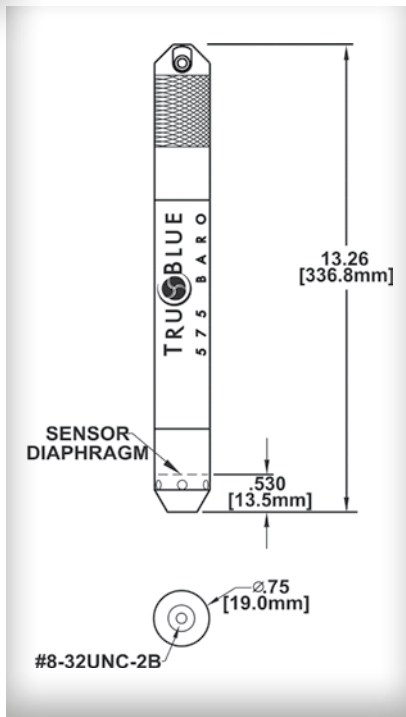


Each unit comes with user-friendly software at no charge.

- View, graph, and export test data.
- Manage transducers by site.
- Use in the field or office.

Order Information

PART NUMBERS	REFERENCE	MATERIAL
575-00100	Absolute	Stainless Steel
575-00110	Absolute	Titanium



Specifications

MANUFACTURER		PSI MODEL	
PSI TRUBLUE		TRUBLUE 575	
SENSORS-BAROMETRIC			
Sensor Type		Oil-filled Piezoresistive	
Sensor Material		316 SS or Titanium	
Range (psia)	Low	8	
	High	16	
Accuracy	0-50°C	±0.1%FS TEB	
Resolution		0.005% FS	
Accuracy is stated as total error band (TEB). This includes the combined errors due to non-linearity, hysteresis, non-repeatability and thermal effects.			
SENSORS-TEMPERATURE			
Sensor Type		Embedded NTC Thermistor	
Range(°C)	Low	0	
	High	50	
Accuracy		±0.2°C	
Resolution		0.01°C	
PHYSICAL			
Diameter	inches	0.75	
Length	inches	13.26	
Weight	oz.	12	
Housing Material		316 SS or Titanium	
OPERATING CONDITIONS			
Pressure (psia)	Low	8	
	High	16	
Temperature (°C)	Low	0	
	High	50	
ELECTRICAL			
Internal Battery Type		3.6V lithium	
Battery Life		5 years	
On-Board Surge Protection		✓	
External Power		6-16 VDC (1mA sleep, 15mA active)	
Communication Interface		RS-485	
DATA LOGGING			
Memory		8 MB	
Data Points		550,000	
Reading Rate	Linear	1 per 5 seconds	
	Linear Avg	programmable	
	Event	programmable	
Fastest Logging Rate	Linear	5 per second	
Methods	Linear	✓	
	Linear Avg	✓	
	Event	✓	



Distributed in Australia by:



FieldTech Solutions

Tel - +61 3 9676 9664

37 Wirraway Drive, Port Melbourne, VIC.3207

Email - sales@fieldtechsoln.com